

**RBWM Function Chart
Place Directorate
October 2024**

Royal Borough of Windsor and Maidenhead

Cabinet and Council

Stephen Evans
Chief Executive and Head of Paid Service

Andrew Durrant
Executive Director of Place

Alysse Strachan
Assistant Director of
Neighbourhood Services

Adrien Waite
Assistant Director of Planning

Chris Joyce
Assistant Director of
Placemaking, Partnerships and
Sustainability

Amanda Gregory
Assistant Director of Housing
and Public Protection

Property Company Board

Ian Brazier-Dubber
Managing Director
RBWM Property Company
Ltd

43.48 FTE / 47 HC

53.66 FTE / 56 HC

33.70 FTE / 39 HC

70.25 FTE / 72 HC

12.0 FTE / 12 HC

- Contracts and Service Improvements
- Sports and Leisure - client and contract management
- Waste – strategy and contract management
- Highways, parking enforcement, parking policy and strategy
- Transport - road safety policy, schools, including escorts, new roads and streetworks, school crossing patrols
- Management of parks, cemeteries, countryside, open spaces, allotments, Public Rights of Way
- Grounds maintenance
- Street cleansing

- Planning:
Development management, enforcement, and policy
- Technical support
- Building Control
- Arboriculture Services

- Joint Emergency Planning Unit
- Lead Local Flooding Authority
- Economic growth
- Tourism
- Town Centre management
- Regeneration
- Museums, Heritage and Arts
- Sustainability and Climate
- Energy
- Natural environment and nature reserves
- Ecology
- Infrastructure planning

- Housing Options and Homelessness including Rough Sleeping
- Housing Strategy and Inclusion – UK resettlement, Disabled Facilities grants and Flexible Home Improvement Loans Ltd
- Trading Standards – Consumer protection
- Licensing - premises, street trading and taxis
- Environmental Health
 - Food hygiene/standards, Health and Safety, infectious disease, private water supplies, animal licensing
 - Private sector housing, HMO and caravan licensing.
 - Environmental Protection
- Community Safety – antisocial behaviour, Channel and community wardens
- Community Safety Partnership
- Control Room and CCTV

- Asset Management – Corporate and Commercial Assets
- Building Services Compliance – Corporate Estate
- Property Services – Mechanical and Electrical Plant
- Project Management – School modification and Decarbonisation
- Development Management – Joint Venture Development, surplus assets, and deposals



**RBWM Function Chart
Adult Services, Health and
Communities Directorate
October 2024**

Royal Borough of Windsor and Maidenhead

Cabinet and Council

Stephen Evans
Chief Executive and Head of Paid Service

Kevin McDaniel
Deputy Chief Executive
Executive Director of Adult Services, Health and Communities (DASS)



<p>Sara Blackmore Director of Public Health</p>	<p>Jesal Dhokia Strategic Lead for Communities and Health Partnerships</p>	<p>Vacant Assistant Director of Performance, Quality and Improvement</p>	<p>Director's Office</p>	<p>Ged Taylor (Interim) Deputy Director of Adult Social Care Operations (Deputy DASS)</p>	<p>Lynne Lidster Director of Commissioning</p>	<p>Helen Woodland Chief Executive of Optalis</p>
<p>9.51 FTE / 10 HC</p>	<p>13.46 FTE / 14 HC</p>	<p>2.0 FTE / 2 HC</p>	<p>2.18 FTE / 4 HC</p>	<p>74.88 FTE / 85 HC</p>	<p>8.56 FTE / 10 HC</p>	<p>OPTALIS</p>
<p>Preventing population ill health</p> <p>System leadership on health inequalities</p> <p>Becoming a Health Promoting Council</p> <p>Assessing current and future health needs</p> <p>Advice to NHS commissioners</p> <p>Commissioned services:</p> <ul style="list-style-type: none"> - Health visiting and school nursing - NHS health checks - Healthy weight - Drug and alcohol misuse - Sexual health - Smoking cessation 	<p>Community engagement and capacity building</p> <p>Community grants to voluntary organisations</p> <p>Community volunteering and prevention</p> <p>Partnerships, including health</p> <p>Carer prevention, reducing and delaying the need for care</p>	<p>* Systems development</p> <p>* PARIS operations</p> <p>CQC readiness and assessment</p> <p>* Performance management, culture and systems</p> <p>* Statutory returns</p> <p>Quality Assurance Framework and operation</p> <p><i>* being covered on an interim basis by Jesal Dhokia</i></p>	<p>Information, Advice and Support Services SEND – Jean Hobson, Information Advice and Support Service Manager</p> <p>MOSAIC project leadership - Sydney Martindale, Interim</p> <p>All Age Safeguarding Board (dotted reporting line to Lin Ferguson) – Mark Fitzgerald, Interim</p>	<p>Information, advice and support service</p> <p>Operational and social care practice</p> <p>Care and resource allocation</p> <p>Assessment and care and support planning</p> <p>Workforce recruitment, retention and development</p> <p>Operational complaints</p> <p>Operational safeguarding</p> <p>Safeguarding Board</p> <p>Collaboration and integration across organisational boundaries, including health and care</p>	<p>Care provider quality assurance and support</p> <p>Strategic procurement of residential, nursing and care at home services</p> <p>Brokerage of placements and care packages for individuals</p> <p>Market management, contract negotiation and provider relations leadership</p> <p>Better Care Fund oversight and control with Frimley ICS</p>	<p>Delivery of specific services for residents including Supported Accommodation, Day Centres, Supported Employment and Reablement Services</p>

RBWM Function Chart
Children's Services and Education
Directorate
October 2024

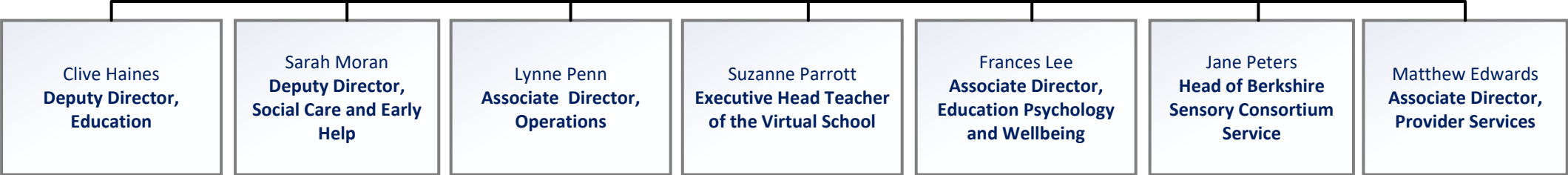


Royal Borough of Windsor and Maidenhead

Cabinet and Council

Stephen Evans
Chief Executive and Head of Paid Service

Lin Ferguson
Executive Director of Children's Services and Education



ACHIEVING FOR CHILDREN

<p>School leadership development</p> <p>initial teacher training</p> <p>Elective home education</p> <p>School support</p> <p>School inclusion</p> <p>SEND</p> <p>Early years development and support</p> <p>Outdoor education</p> <p>Adult education</p>	<p>Single point of contact/multiagency safeguarding hub</p> <p>Early help and family hubs</p> <p>School nurses and health visitors</p> <p>Youth offending service</p> <p>Support and Safeguarding service</p> <p>Children in Care and Care Leavers</p> <p>Disabled Children and Young People</p> <p>Adoption services</p> <p>Independent Reviewing Service</p> <p>Performance and quality assurance</p> <p>Corporate Parenting</p>	<p>School Place Planning and Schools Capital Programme</p> <p>School Admissions and Child Employment</p> <p>School Transport</p> <p>Business Services, commissioning, placement commissioning and procurement</p> <p>Business development</p> <p>Business support and digital transformation</p>	<p>Virtual School - services for all children and young people with a social worker</p> <p>Virtual College – 16 - 25</p>	<p>Wellbeing Services</p> <p>Educational Psychologists</p> <p>Getting Help team</p> <p>Systemic Wellbeing team</p>	<p>Berkshire Sensory Consortium Service</p>	<p>Dotted line management</p> <p>Fostering/residential services</p>
--	--	--	--	--	---	---

**RBWM Function Chart
Resources Directorate
October 2024**

