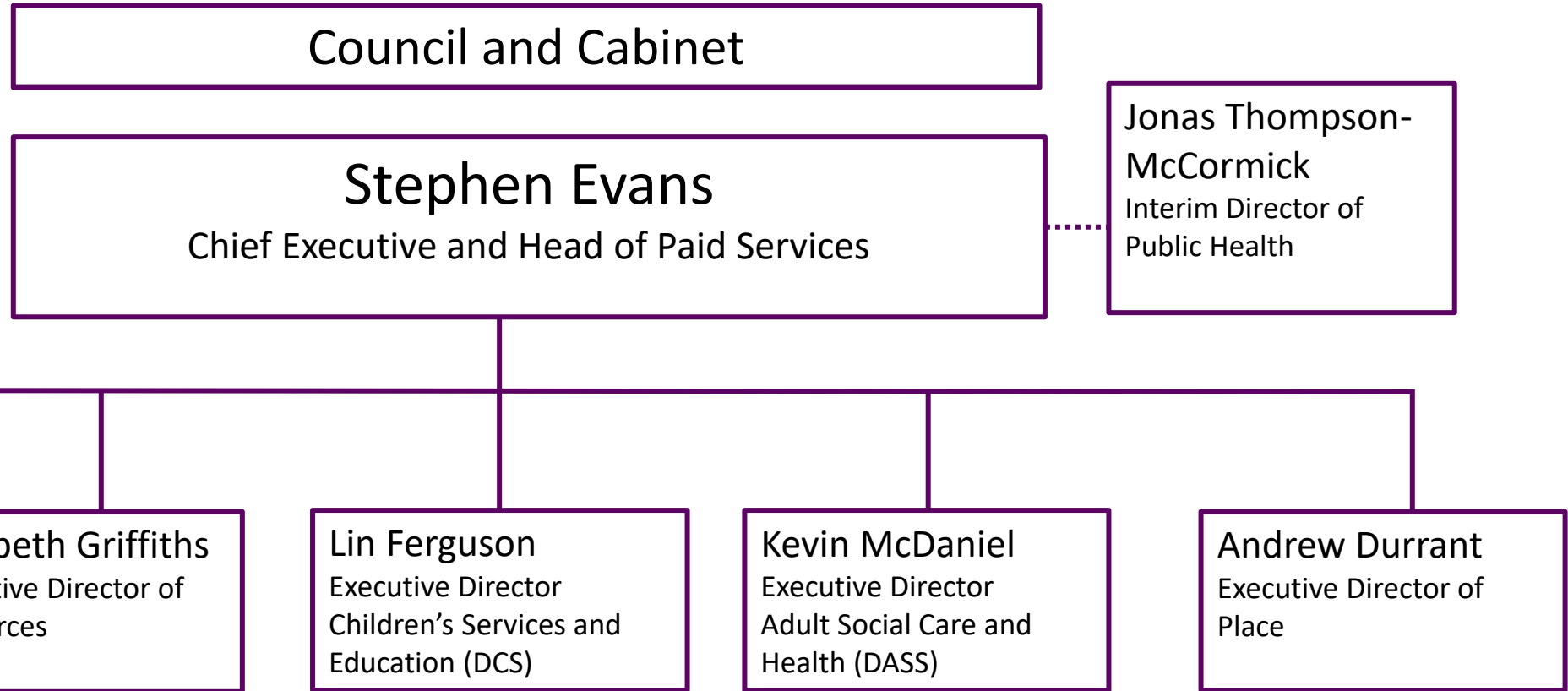




*Royal Borough of Windsor and
Maidenhead Organisation
Structure
September 2024*







Elizabeth Griffiths
Executive Director of Resources

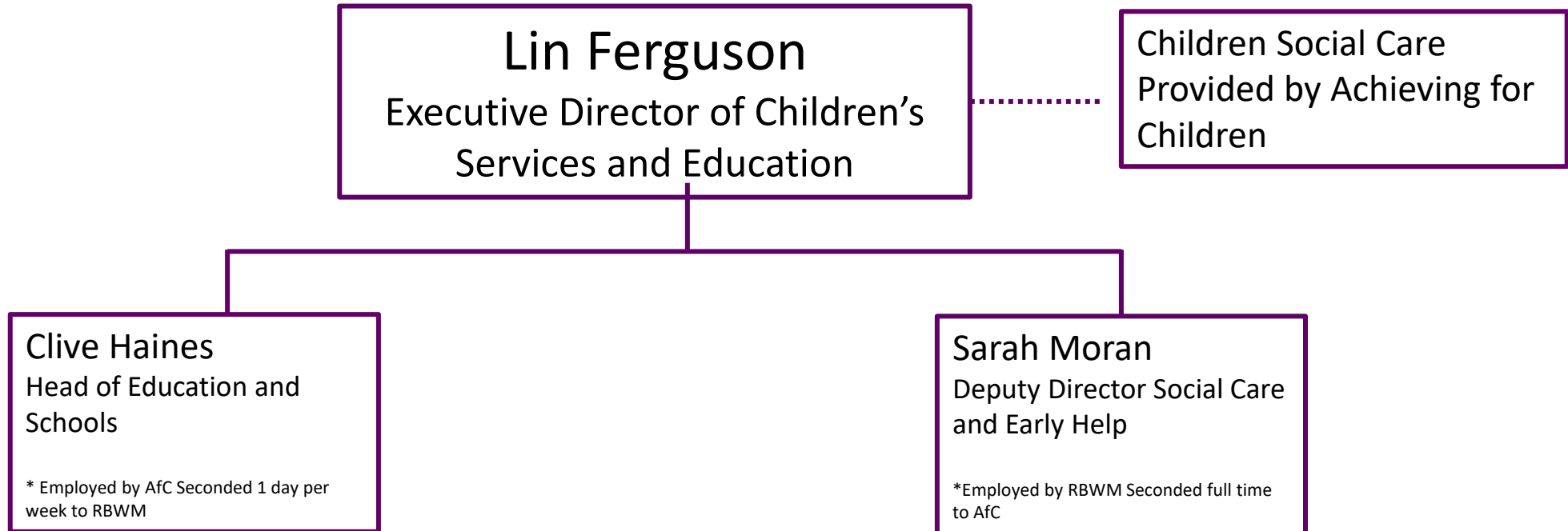
Julian McGowan
Assistant Director of
Finance and Deputy S151
Officer

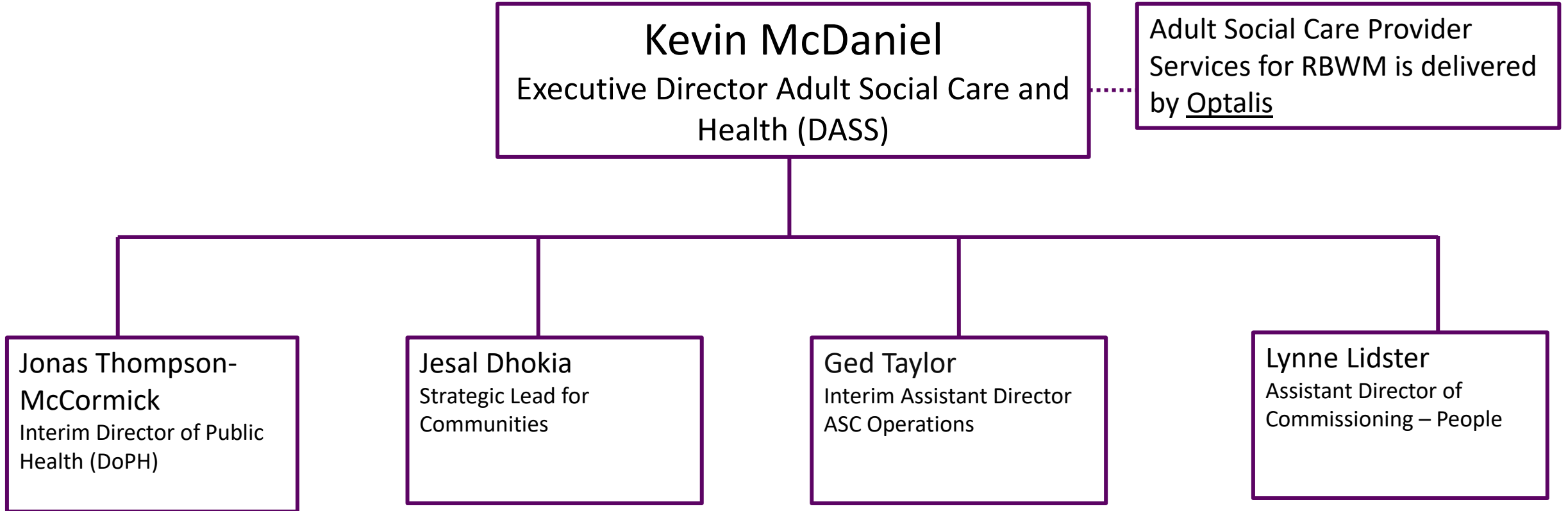
Louise Freeth
Assistant Director of
Revenue, Benefits,
Library and Resident
Services

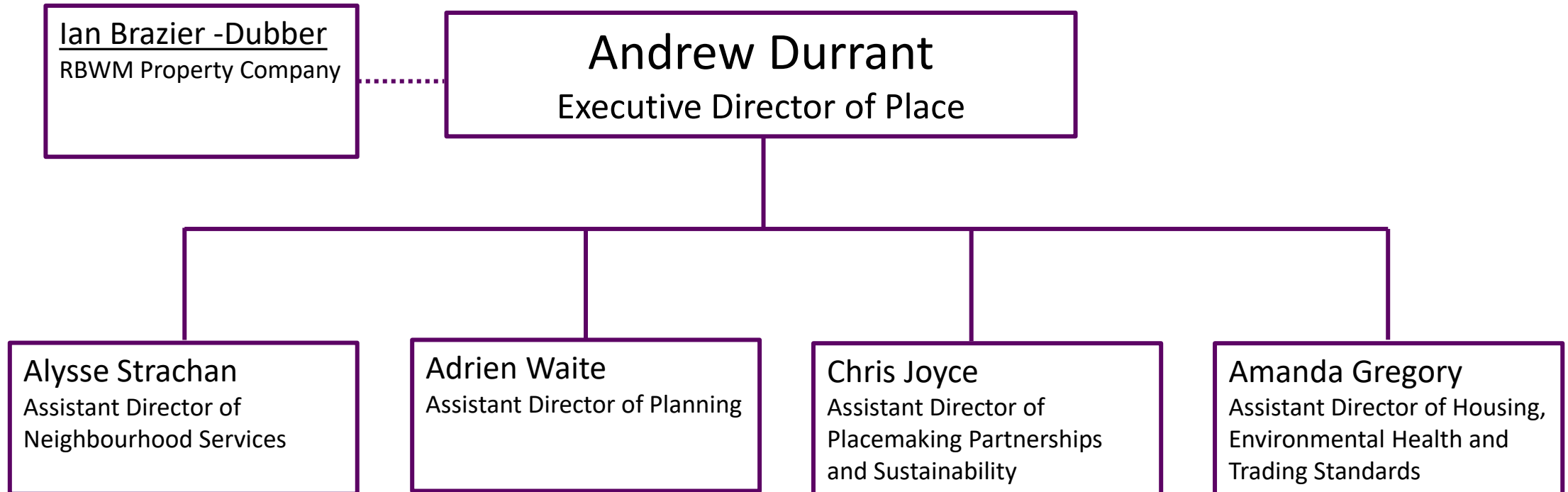
Nikki Craig
Assistant Director of HR,
Corporate Projects and
IT

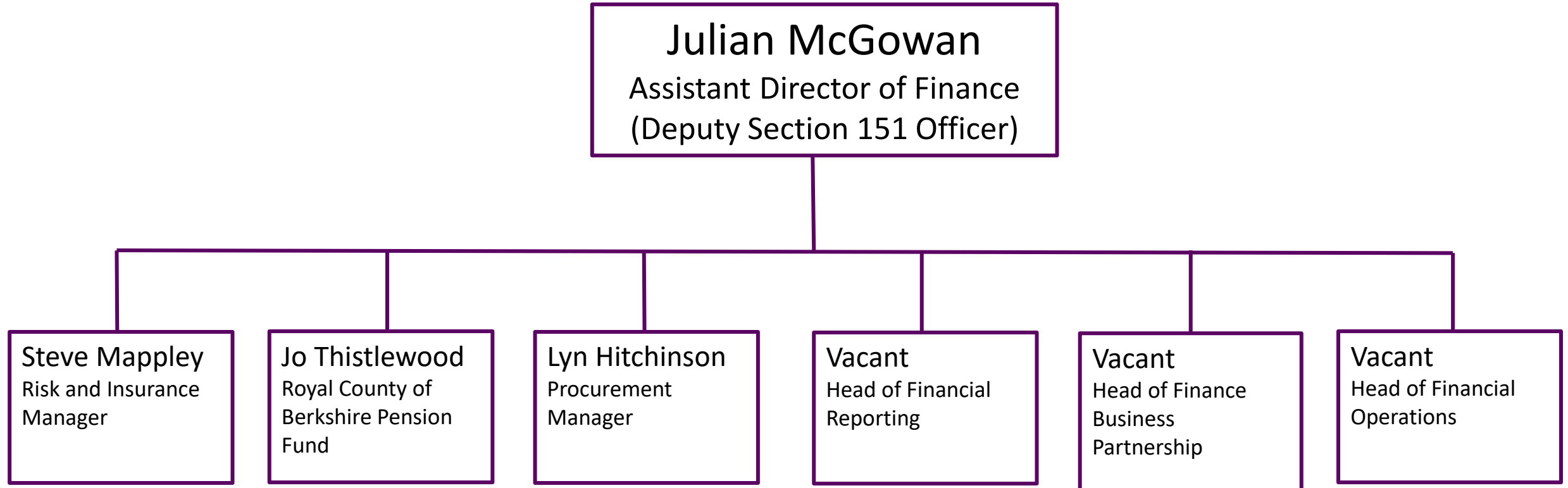
Elaine Browne
Deputy Director of Law
and Governance and
Monitoring Officer

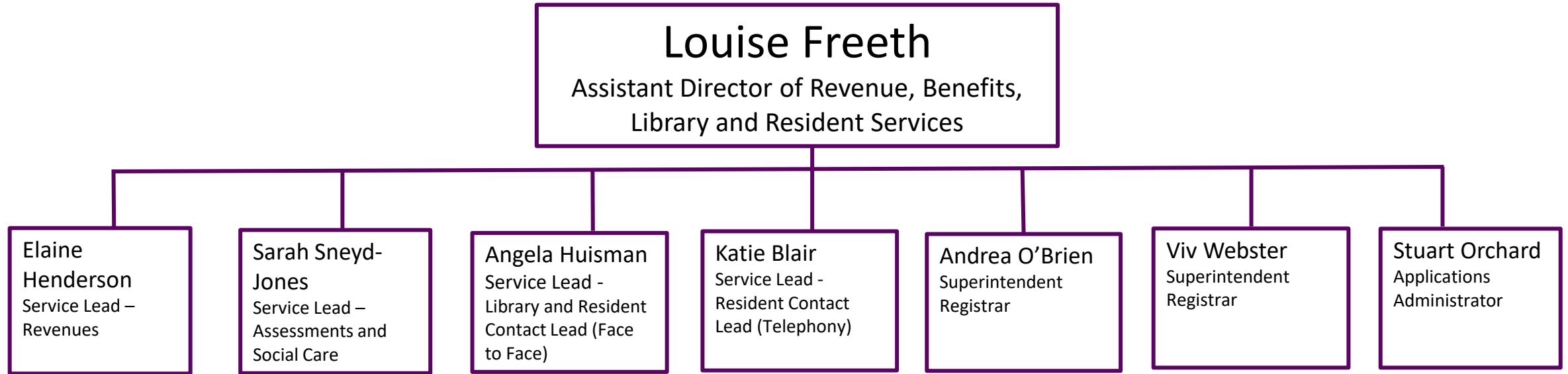
Lisa Fryer
South-west Audit
Partnership

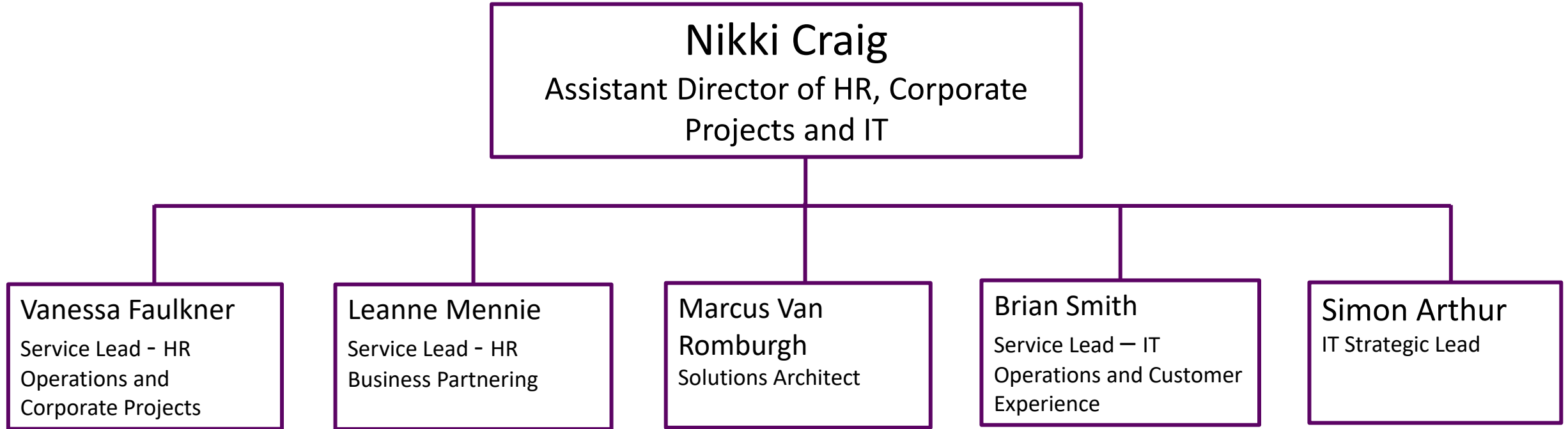


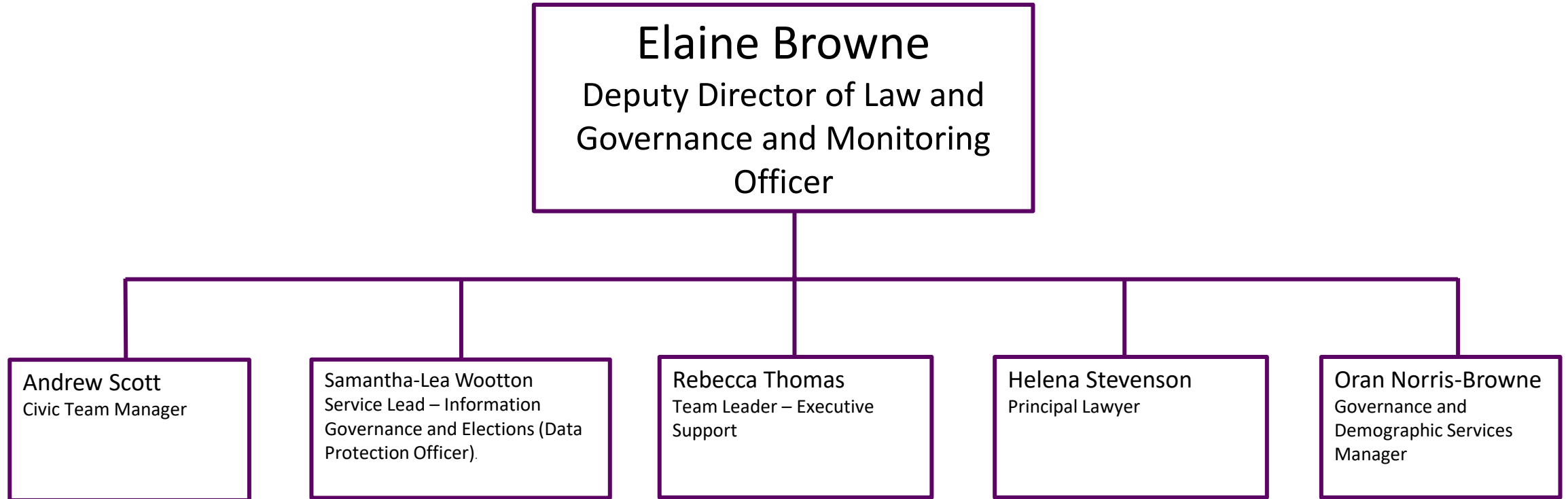


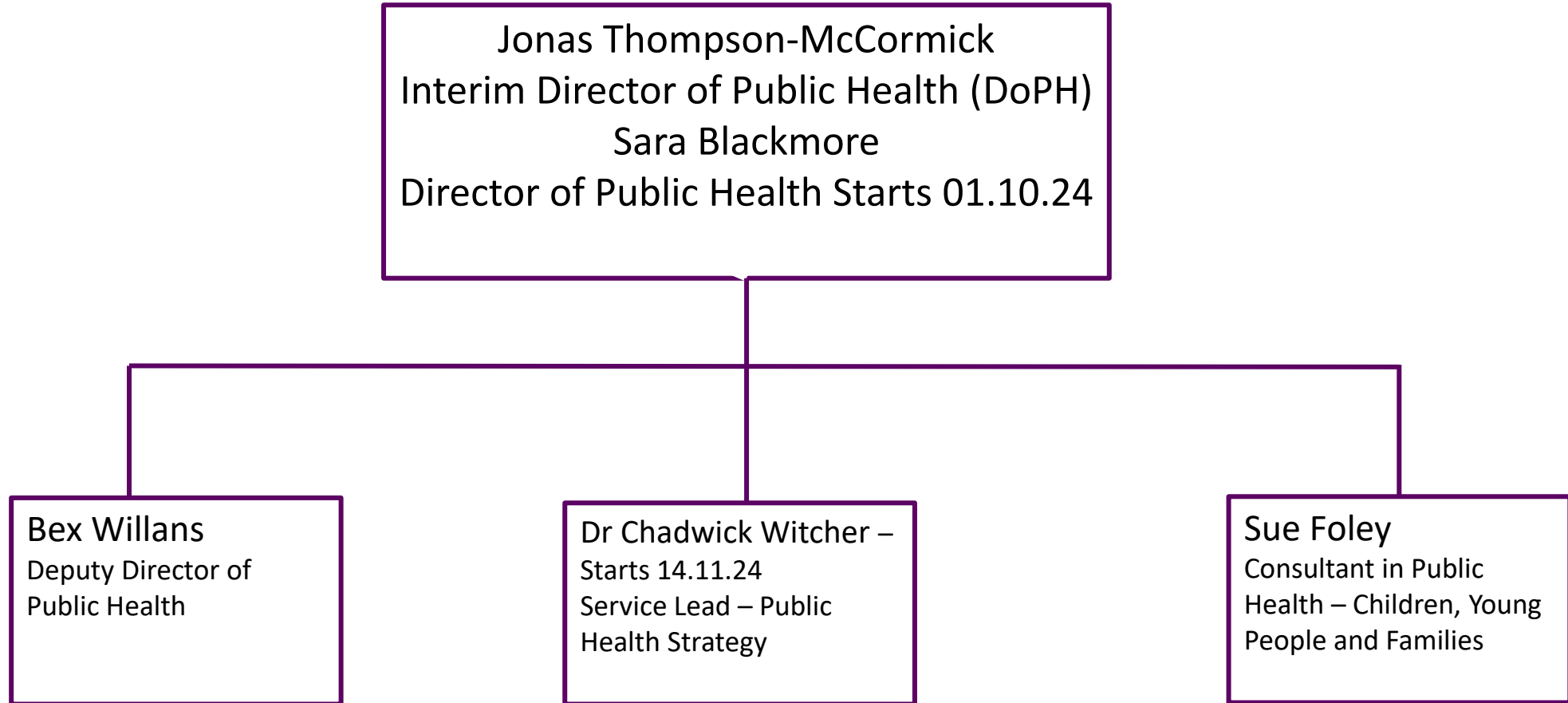


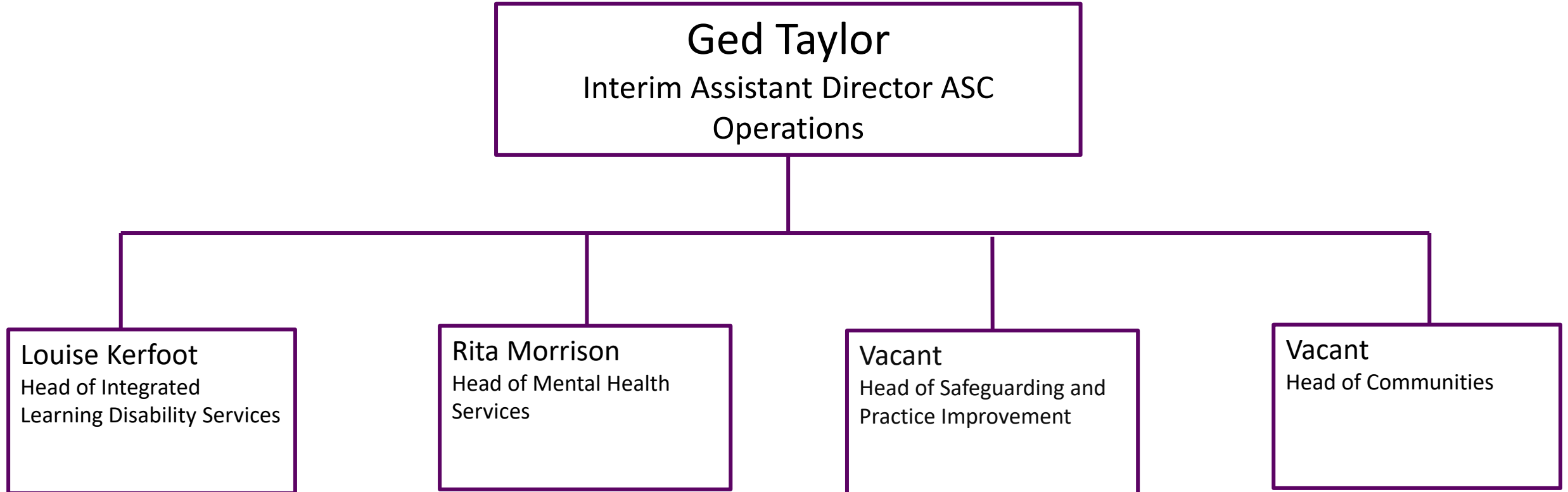


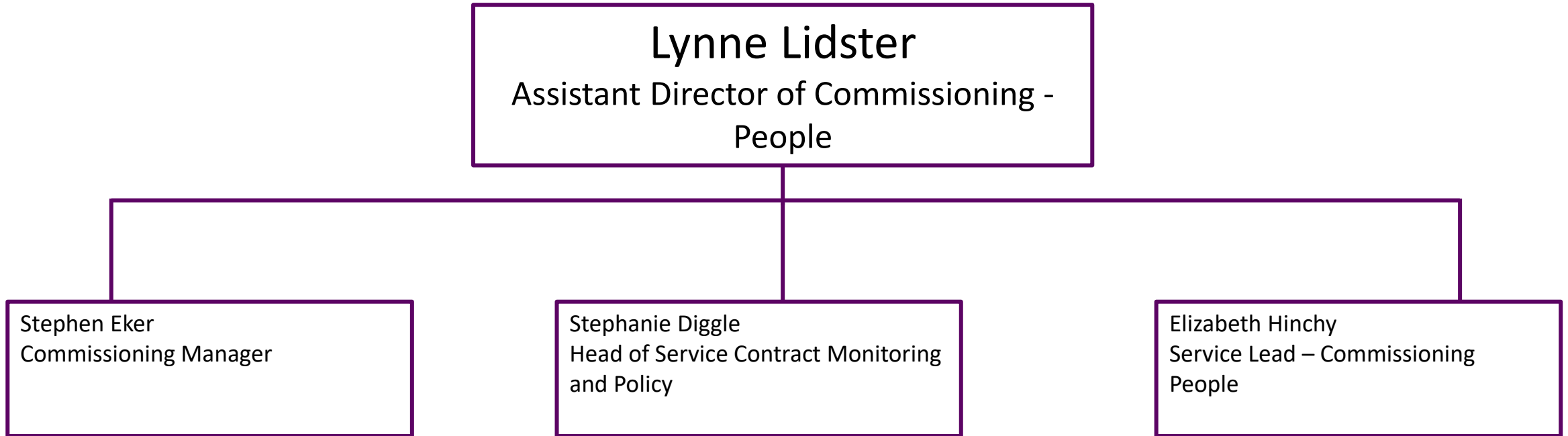


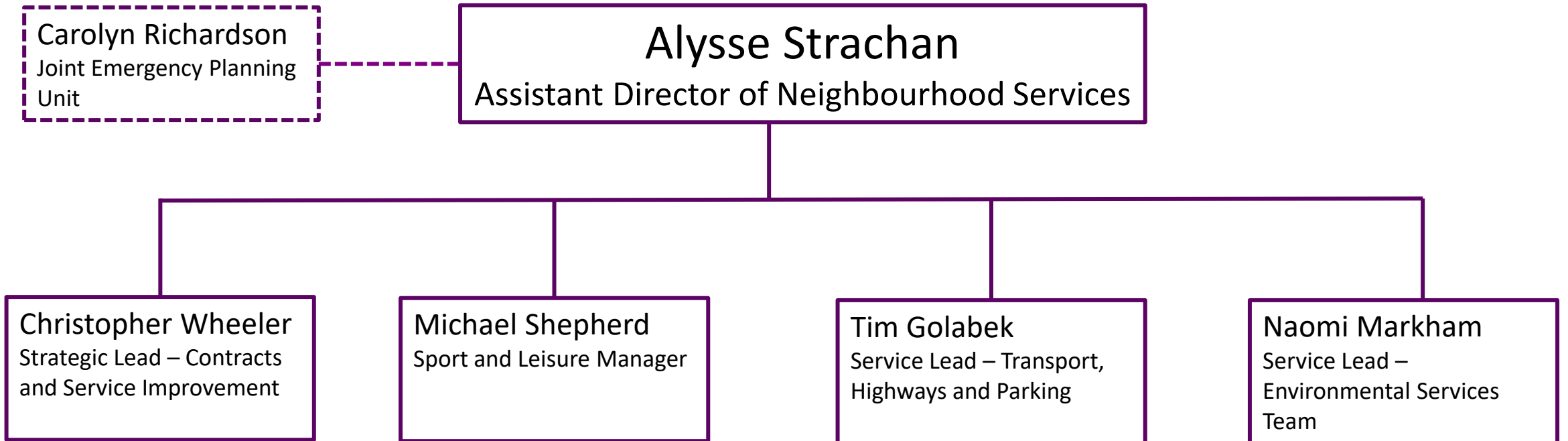


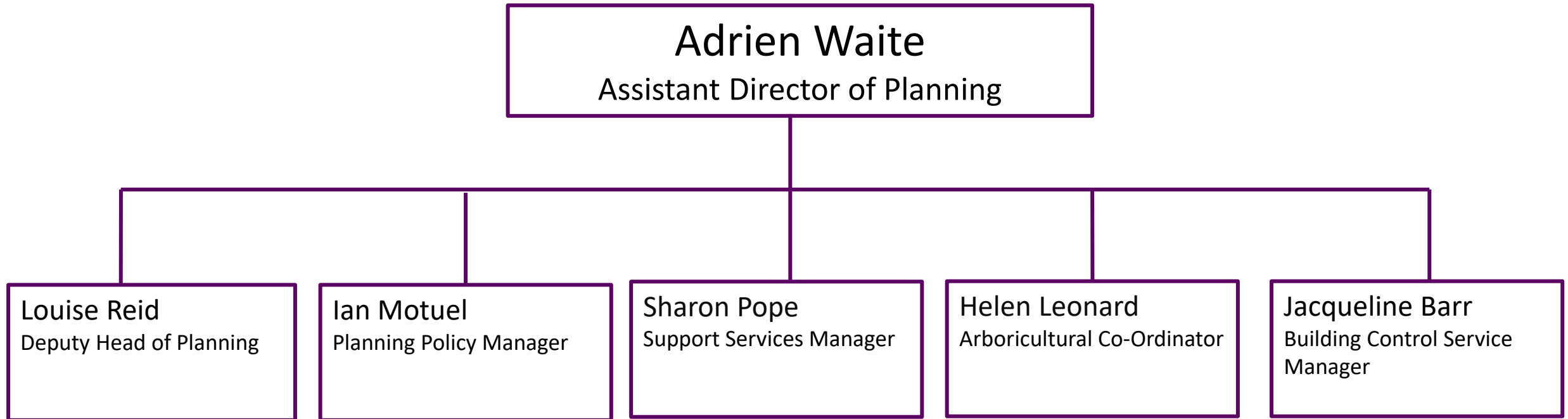






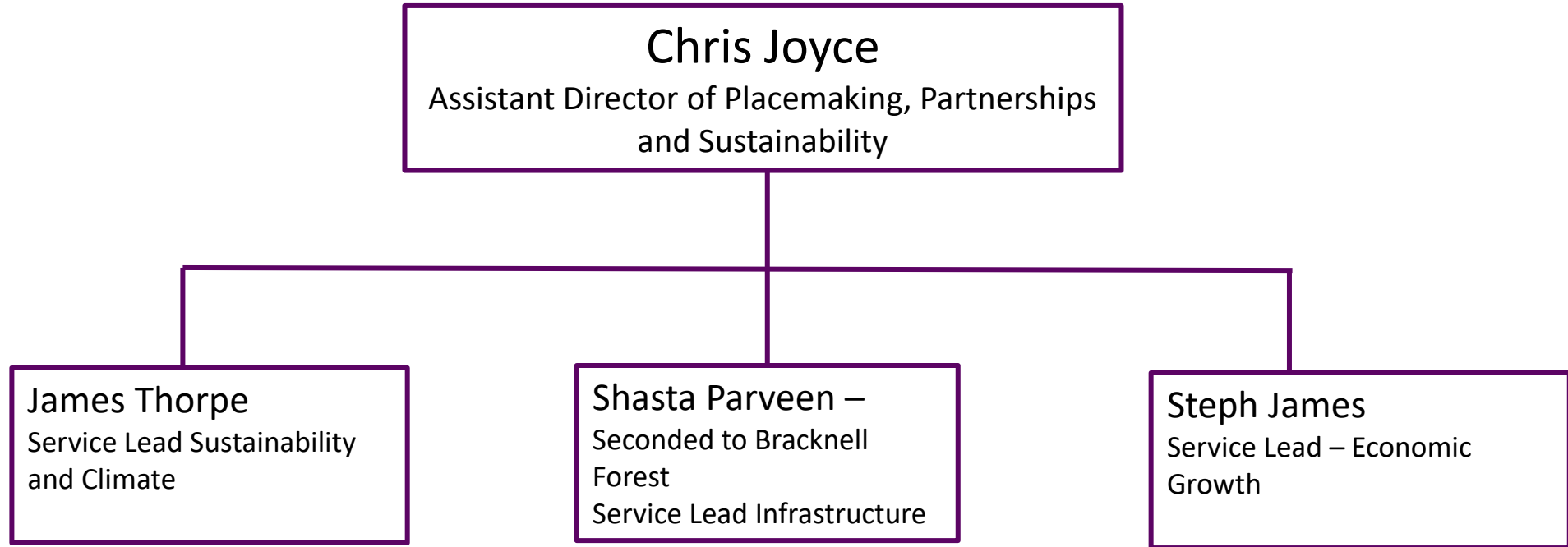


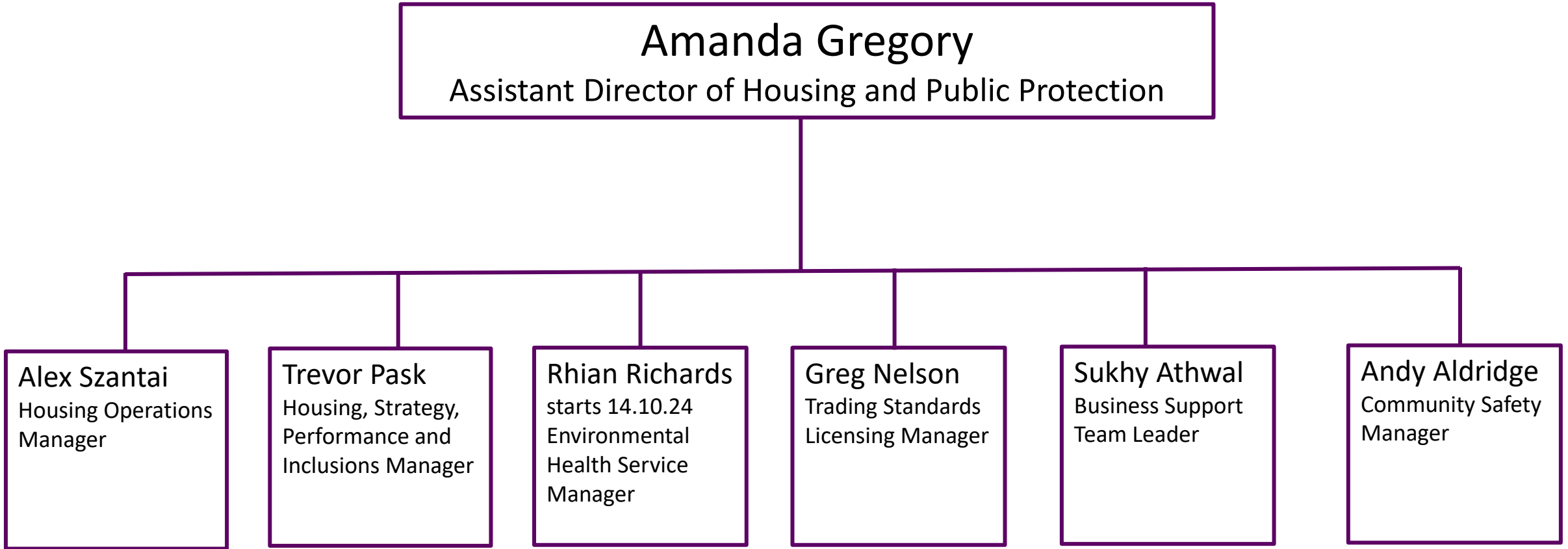






Structure Level 17







Ian Brazier-Dubber
RBWM Property Company

RBWM Property Company