

Population information for children of school age (and under) in Maidenhead (2020)



Next update:
 This sheet is next due to be updated in Summer 2021 with the 2019/20 Births data.

Introduction
 This sheet provides information about the numbers of children born in Maidenhead and the number of children resident in Maidenhead. The data forms the basis of projections of future demand for school places. Two datasets are used:

Births data
 This is the number of children born, by academic year, in the area. This is based on births registered with local authority Registry Offices and collected nationally by the Office of National Statistics. Each summer, the Royal Borough is provided with the number (and gender) of children born in each postcode in the borough, in the academic year that finished the previous August. The advantage of this data is that it is very accurate. The disadvantage is that it can become rapidly out-of-date as families move in and out of the borough. The number of five year olds in a particular area will almost certainly not be the same as the number of children born in that area five years previously.

General Practitioners (GP) patient registrations
 This is a count of the number of children resident in each postcode in the borough, by gender and age, as at 31st August each year. The dataset covers children aged 0 to 18, and is provided for the Royal Borough via our Public Health Team, from the NHS Child Health Information Systems (CHIS). The advantage of this data is that it is up-to-date, reflecting recent movement of families in and out of the borough. The disadvantage is that it relies on families and GPs to update their patient records accurately and quickly. Not all families will, for example, necessarily inform their GP when moving.

This population information is provided by geographical area (see far right for explanation), in the charts and tables in this sheet.

Although these numbers give some indication of future demand, the impact of housing currently being built or planned is not shown.

1. Demographic Data for Maidenhead

This chart shows the population data for Maidenhead as a whole.

The purple columns show the no. of births in Maidenhead, by the year in which the children start(ed) in Reception, and by their age as at 31st August 2017. The gold column is the current (2017-18) Reception cohort.

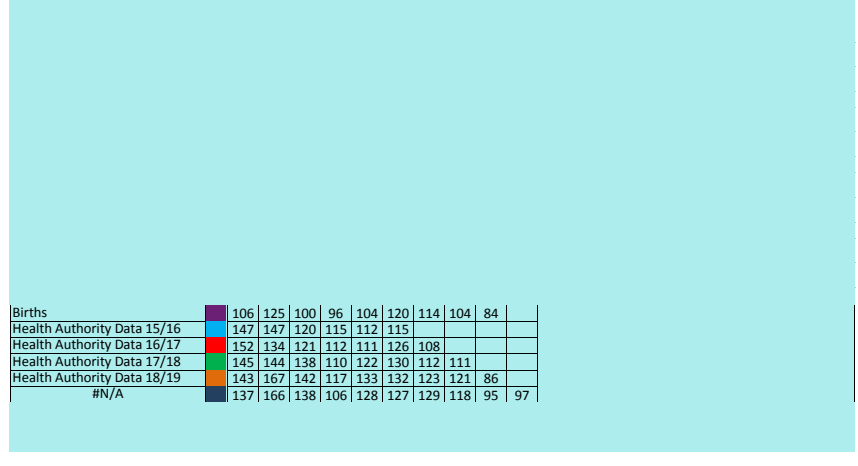
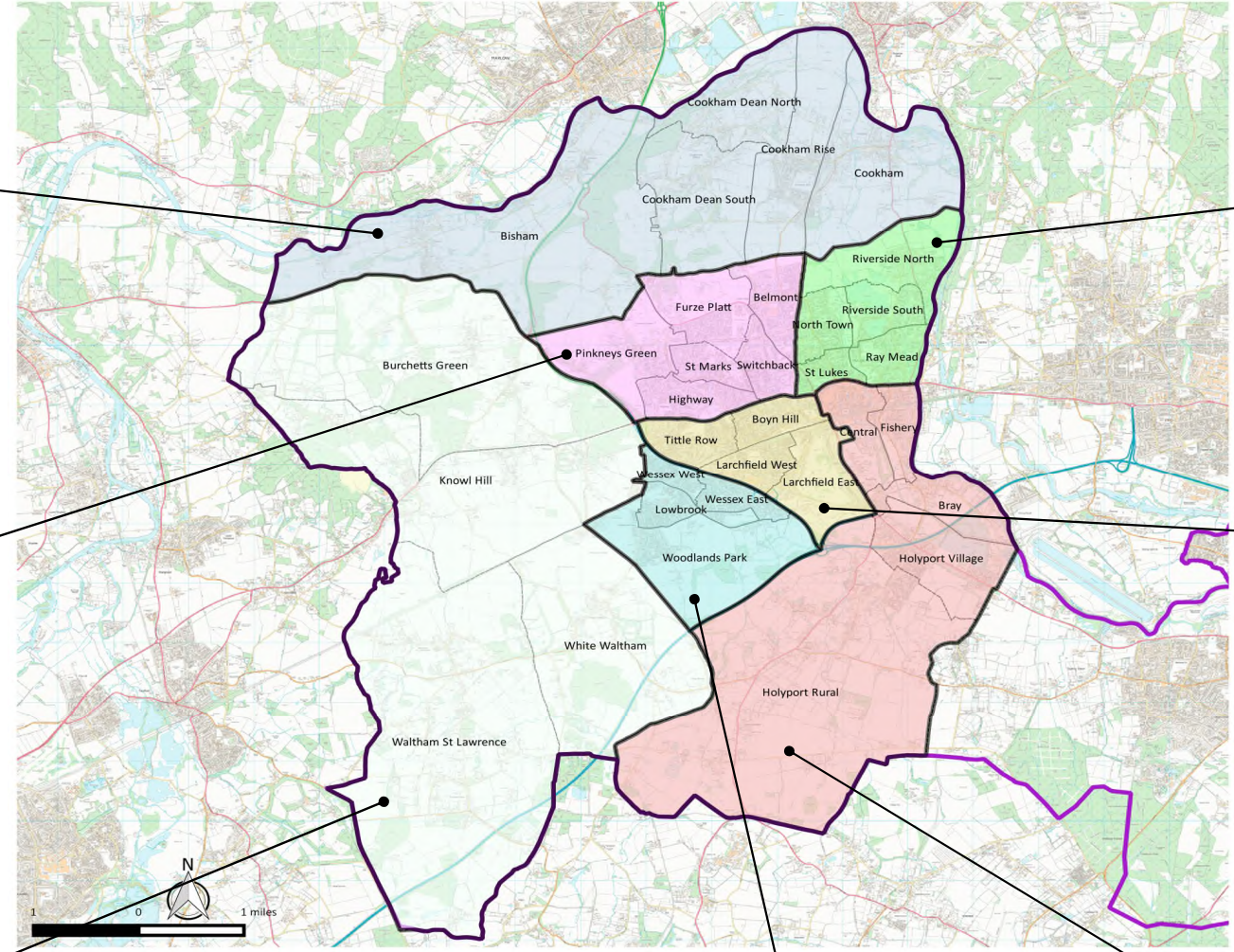
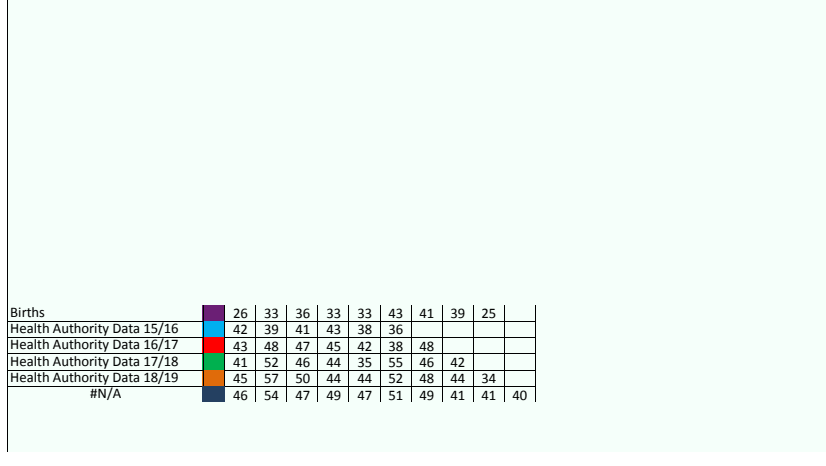
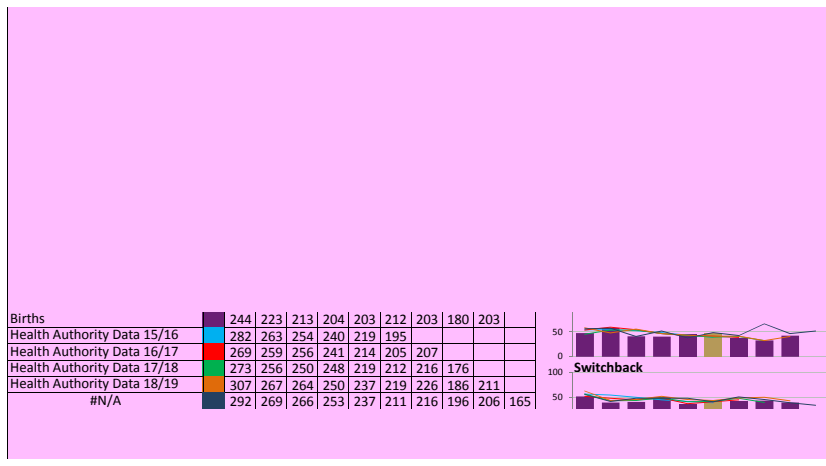
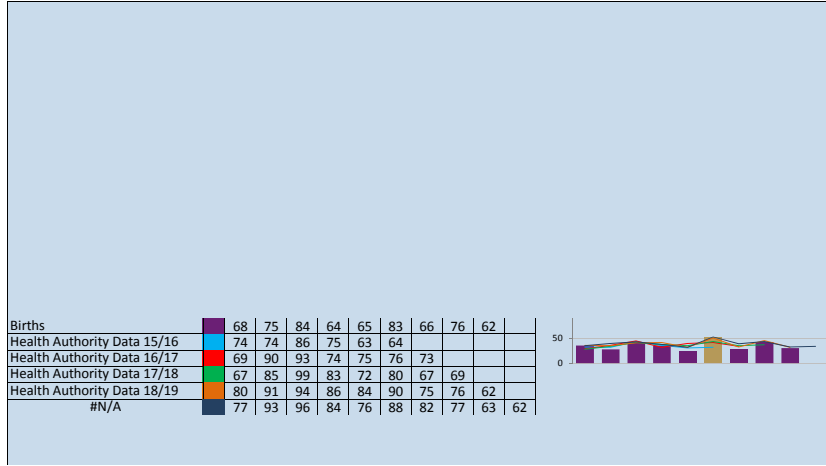
The coloured lines represent the most recent GP patients datasets, shown by the year of start in Reception and by age.

Starts Reception in September:

Age (as at 31/08/2020):

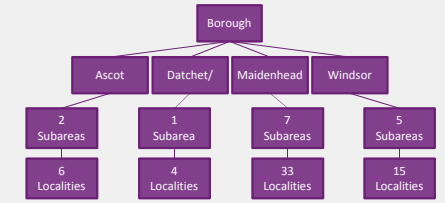
	2006	2007	2008	2009	2010	2011	2012	2013	2014	2015	2016	2017	2018	2019	2020	2021	2022	2023	2024
Births	783	866	866	841	912	946	939	969	961	947	1,000	906	883	912	944	936	906	831	0
Health Authority Data 2015/16	926	975	966	958	1,010	1,078	1,112	1,104	1,098	1,104	1,081	1,044	993	936	917				
Health Authority Data 2016/17	946	991	928	1,005	1,034	1,122	1,134	1,110	1,136	1,075	1,118	1,025	992	961	994	913			
Health Authority Data 2017/18	883	997	929	962	1,063	1,090	1,119	1,137	1,130	1,078	1,119	1,044	1,005	986	1,009	921	883		
Health Authority Data 2018/19	922	1,051	1,007	996	1,103	1,151	1,188	1,214	1,170	1,162	1,200	1,117	1,038	1,053	1,075	973	973	857	
Health Authority Data 2019/20	853	1,014	958	963	1,061	1,106	1,153	1,166	1,135	1,118	1,181	1,100	1,038	1,027	1,060	979	966	888	812

Starts Year 3 (Junior) in Sept:
 Starts Year 7 (Secondary) in Sept



(c) Crown copyright and database right 2020. OS 100018818
 1. This map and the information contained within it are protected by intellectual property rights.
 2. Whilst you have certain statutory rights that include to view and read the map, you are granted no automatic additional use rights whatsoever.
 3. You the recipient of the information must ensure that the map meets your needs and are entirely responsible for the consequences of using the map.

Geographical areas
 To analyse how the child population is changing, we have divided the borough up into areas, subareas and localities:



This allows the borough to examine population data at a town level, and more locally, e.g. within a particular school's designated area, for example.

This sheet presents the population data for the geographical levels within the Maidenhead area.

