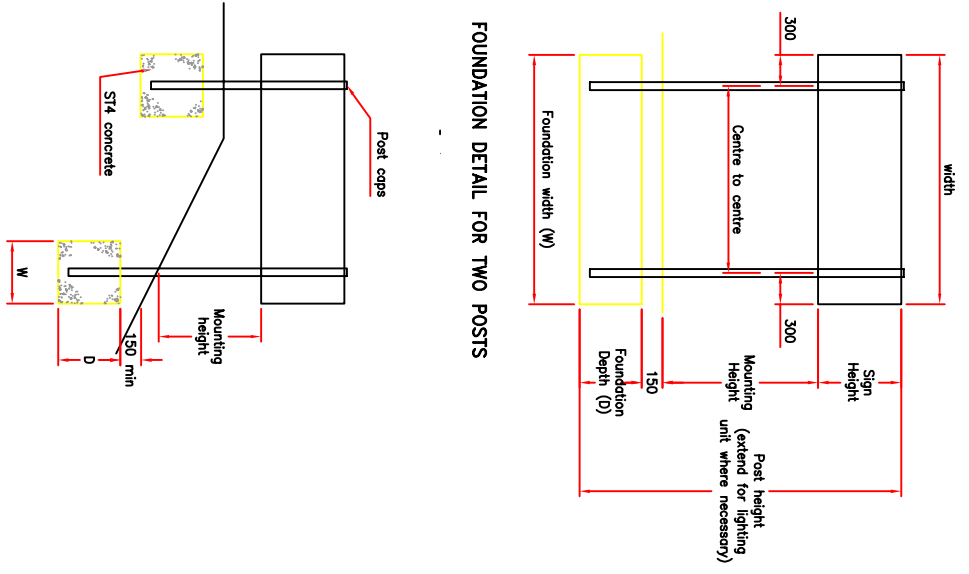


**FOUNDATION FOR SIGN POST WITH ELECTRICAL BASE HOUSING**  
(Straight post similar - duct omitted)



**TYPICAL FOUNDATION DETAIL ON EMBANKMENT**

**FOUNDATION DETAIL FOR TWO POSTS**

Community Services Directorate  
Town Hall, St. Ives Road  
Maldenhead, Berks,  
SL6 1RF

Tel: 01628 798888  
Fax: 01628 796774  
http://www.dwmn.gov.uk



<b>Project</b>	STANDARD DRAWINGS
<b>Title</b>	TRAFFIC SIGNS

**Drawing Number**  
SD/1200/01

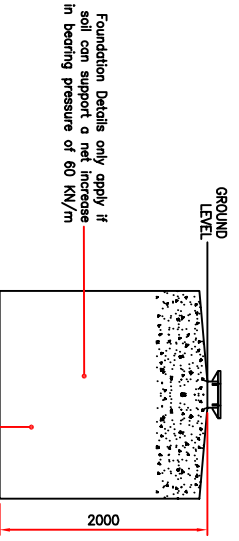
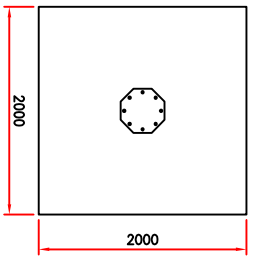
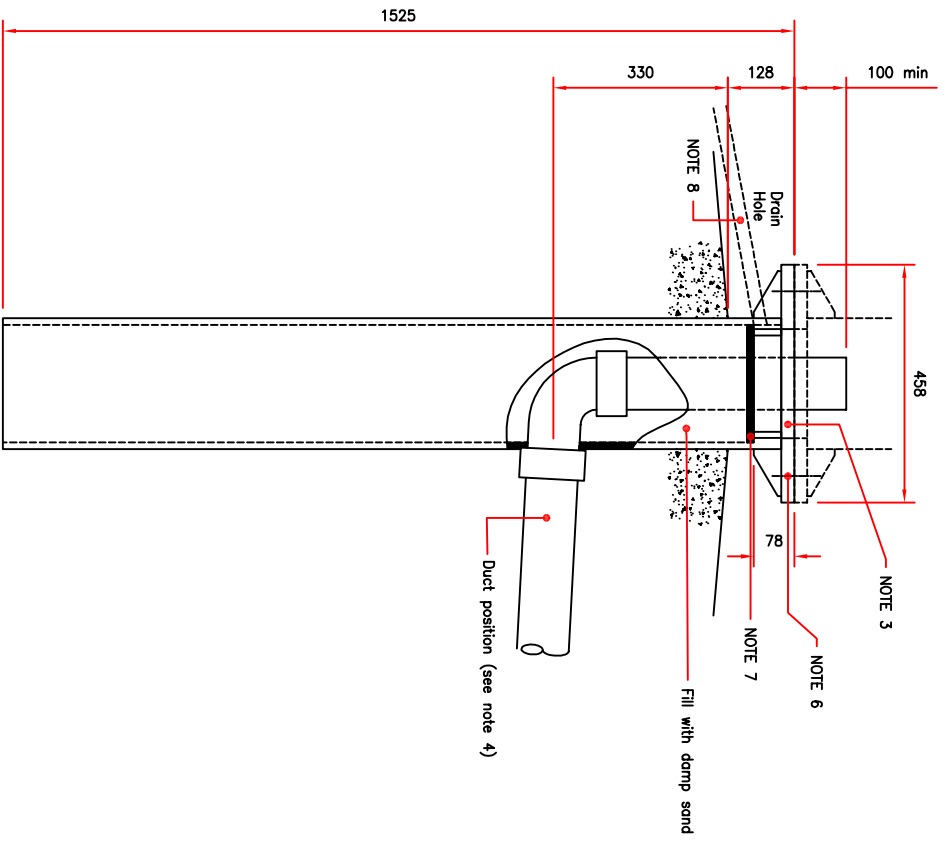
- Notes**
- All dimensions in millimetres.
  - All signs to comply with the Traffic Signs Regulations and General Directions 2002.
  - Sign positions to comply with the requirements of the Engineer.
  - Single posts will normally be sited at the back of footway or highway verge.
  - Clearance to the edge of signs must be increased where there is a severe camber or crossfall or sign is in a central reservation.
  - Traffic signal poles must be set back 1000 from edge of carriageway. The Engineer must be consulted if a pole in this position will affect a footway or is otherwise impractical.
  - Mounting heights of all signs to be to the approval of the Engineer.
  - Internally illuminated signs are not permitted.
  - Not more than two signs are to be mounted on one post.
  - Illuminated signs or signs greater than 600 wide shall not be fitted to lamp columns.
  - Post height must allow for sloping ground.
  - Posts shall be steel and comply with BS 873.
  - Standard signs to be mounted on a 76 diameter post with a wall thickness of 3.2.
  - Open ended poles must be provided with sealed caps.
  - Foundation depth D must be 600 min.
  - Overing to be backfilled with Type 1 sub-base material in paved areas.
  - Min. 150 deep topsoil required over foundations in verges.
  - Posts with electrical housing shall be sited so that the door faces away from oncoming traffic.
  - For illuminated signs supported on more than one post the electrical housing must be in the post furthest from the carriageway.
  - Lighting units must be approved and will be dependant on size of sign.
  - All illuminated signs must be identified by a unique number which will be provided by the Engineer.

**Do not scale this drawing**

Rw	Date	Notes revised and updated	Checked
A	07/06		JW

<b>Drawing No.</b>	SD/1200/01	<b>Revision</b>	A
<b>Scale</b>	NOT TO SCALE	<b>Date</b>	JULY 06
<b>Drawn</b>	RWJY	<b>Checked</b>	JW
		<b>Approved</b>	JR

Reproduced from the Ordnance Survey Mapping with the permission of the Ordnance Survey. All rights reserved. No part of this publication may be reproduced, stored in a retrieval system, or transmitted, in any form or by any means, electronic, mechanical, photocopying, recording, or by any information storage or retrieval system, without the prior written permission of the Ordnance Survey. Licence Number: LA086118



**Tightening Procedure**  
 Torque Lock Nut – (Torque settings as directed by manufacturer)  
 Torque Full Nut  
 Threads to be lightly oiled before assembly

Bolt assembly to consist of the following :-  
 8 (M24 x 90) long hex bolts, Grade 8.8 to BS 3692  
 8 (M24) Full nut, Grade 8 to BS 3692  
 8 (M24) Lock nut, Grade 8 to BS 3692  
 8 (24) large plain washer to BS 4320

Community Services Directorate  
 Town Hall, St. Ives Road  
 Maidenhead, Berks,  
 SL6 1RF  
 Tel: 01628 798888  
 Fax: 01628 796774  
 http://www.dwmn.gov.uk



**Project**  
 STANDARD DRAWINGS  
**Title**  
 CAMERA POLE BASE

**Drawing Number**  
 SD/1200/02

- Notes**
- All dimensions in millimetres.
  - Pole shall be mounted in concrete. Typical size in undisturbed soil as shown. If soil has been disturbed or if any doubt exists, the Engineer shall be contacted before installation proceeds.
  - Top face shall be level to 0.25"
  - Cable entry shall be by 100mm uPVC duct. The duct shall align with hole in base and shall slope down to prevent water ingress.
  - Concrete surface shall have 5' taper to act as water shed.
  - Protect nuts, bolt heads and threads of base fixing and wrap around edge of root and rest flange to produce a watertight seal with the following materials:  
 1 coat Denso paste  
 1 coat Denso tape (30mm wide)
  - Top of damp sand sealed with C.I.B.A. Gedy XD 4133 Resin and hardener to level of drain hole, min. thickness 6mm.
  - Drain duct (25 dia.) positioned in root drain hole and sealed with Denso paste and tape (see note 5). Length of duct to suit site and drainage conditions.
  - Camera pole shall be supplied by the Employer and shall be delivered to site and stored by the Contractor.
  - The Contractor shall erect the pole using a suitable crane for a 15m pole.  
 a) Approx weight of 15m pole = 1149kg  
 b) Approx weight of the root = 130kg

**Do not scale this drawing**

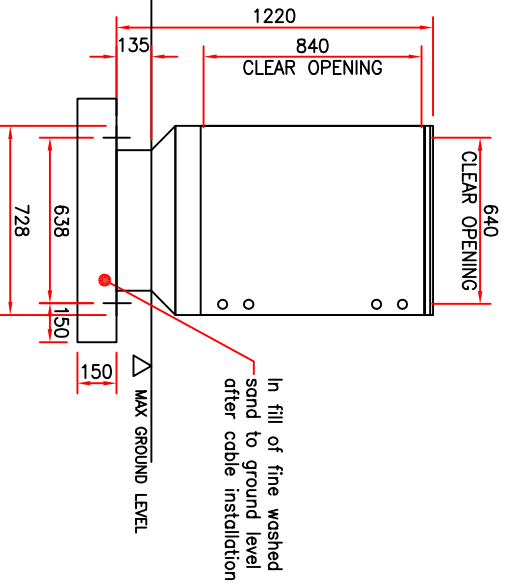
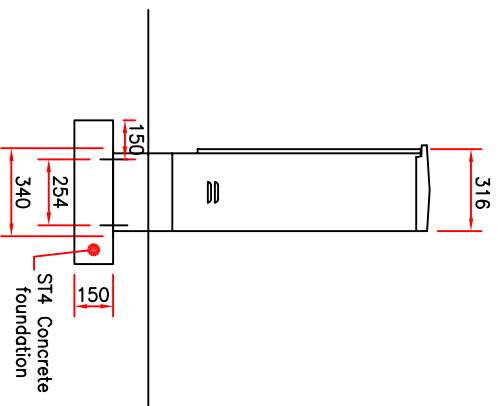
Rw	Date	Notes revised and updated	Checked
A	07/06	Notes revised and updated	JW

**Drawing No.**  
 SD/1200/02

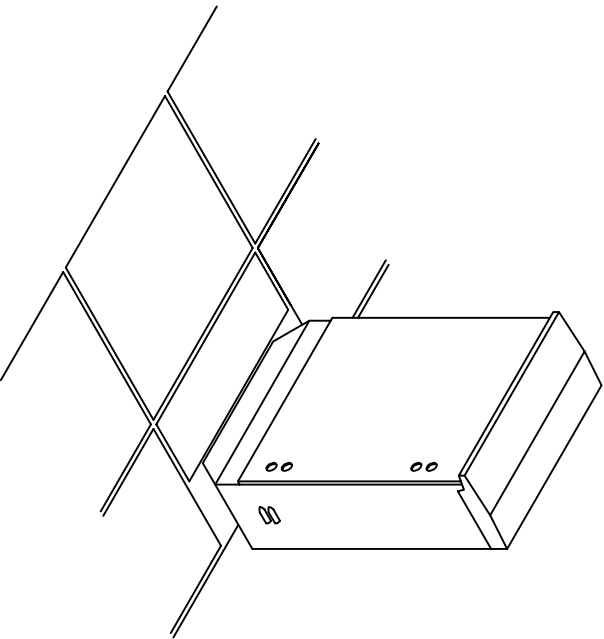
Revision	Date
A	JULY 06

Scale	Checked	Approved
NOT TO SCALE	JW	JR

Reproduced from the Ordnance Survey Mapping with the permission of the Controller of Her Majesty's Stationary Office. Copyright © lead to presentation or other proceedings. Royal Borough of Windsor and Maidenhead - Licence Number LA68118



Cabinet to be bolted to foundation using 4No.12 x 100 Rogbolls or rawbolts.



**Drawing Number**  
SD/1200/03

- Notes**
- All dimensions in millimetres.
  - Cabinet shall be mounted in concrete.
  - Cable entry shall be by 100mm dia. uPVC duct.
  - All equipment to be to the specification and/or approval of the Engineer.
  - All equipment to be sited within the highway boundary.
  - Top of damp sand sealed with C.I.B.A. Geigy XD 4133 resin and hardener to level of base of cabinet, min. thickness 6mm.
  - Reinstatement to excavations in paved areas to be Type 1 Sub base material up to formation level.
  - A hard standing of Concrete paving slabs or similar is required in front of door in verges.
  - Cabinet to be painted with two coats of gloss paint to BS4800. Colour as specified.
  - Cabinet to be a Philips Communication type or similar approved.

**Do not scale this drawing**

Rw	Date	Notes revised and updated	JW	Checked
A	07/06	Notes revised and updated	JW	

<b>Drawing No.</b>		<b>Revision</b>	
SD/1200/03		A	
<b>Scale</b> NOT TO SCALE	<b>Drawn</b> RWJY	<b>Checked</b> JW	<b>Date</b> JULY 06
			<b>Approved</b> JR

Reproduced from the Ordnance Survey Mapping with the permission of the Controller of Her Majesty's Stationary Office. Crown Copyright. Unauthorised reproduction infringes Crown Copyright and may lead to prosecution or civil proceedings. Royal Borough of Windsor and Maidenhead - Access Number: 258315

Community Services Directorate  
Town Hall, St. Ives Road  
Maidenhead, Berks,  
SL6 1RF  
Tel: 01628 798888  
Fax: 01628 796774  
http://www.tbwm.gov.uk



**Project**  
STANDARD DRAWINGS

**Title**  
STD STREET CABINET