

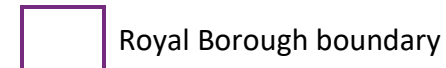
Proposal to change the designated area for Cookham Rise Primary School

This shows a proposed change to the designated area for Cookham Rise Primary School, which would come into effect in September 2023, if agreed.

Maidenhead primary schools (Reception intake)

- 7 [Cookham Dean CE Primary School](#)
- 9 [Cookham Rise Primary School](#)

designated area

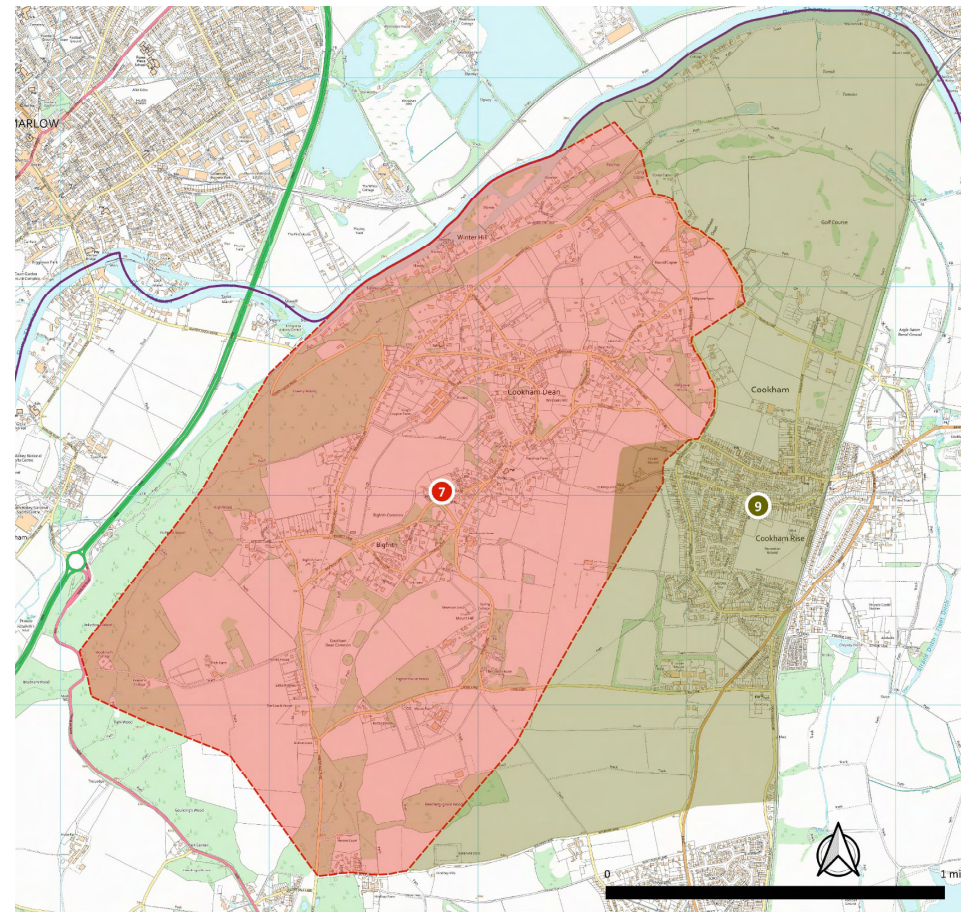


Notes.

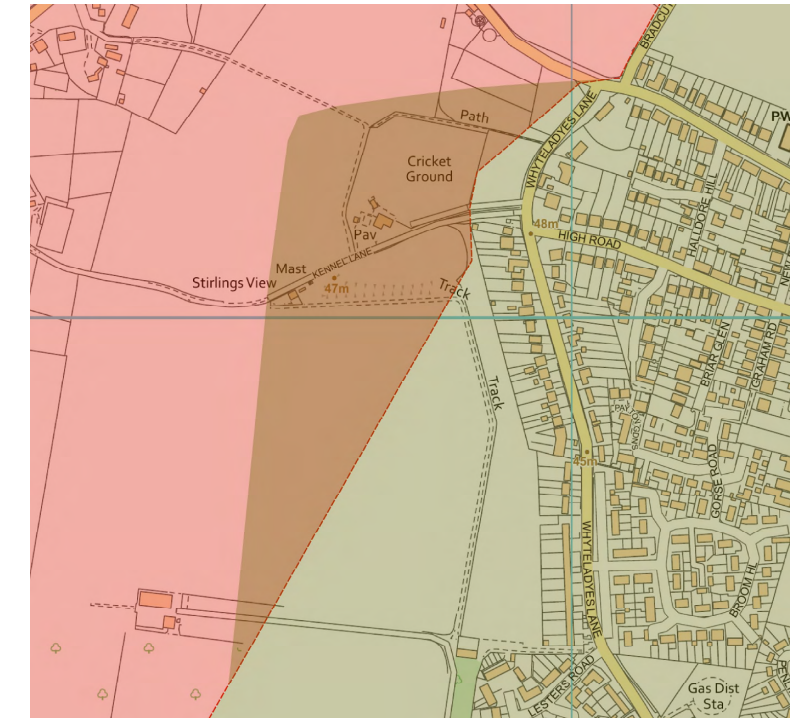
- a) Map 1 shows the current designated areas for Cookham Dean CE Primary School (orange area) and Cookham Rise Primary School (brown area).
- b) There is a small area where the designated areas for both schools overlap. This is around the Cookham Dean Cricket club, and is shown in more detail on Map 2. We believe there is currently one residential address within that area.
- c) It is proposed that the Cookham Rise Primary School designated area is reduced slightly so that it no longer covers the cricket ground. The new boundary, shown in Maps 3 and 4, will instead match the Cookham Dean CE Primary School boundary.
- d) No change is proposed to the designated area for Cookham Dean CE Primary School.

Current designated areas for Cookham Dean and Cookham Rise Primary Schools

Map 1: full extent of current designated areas

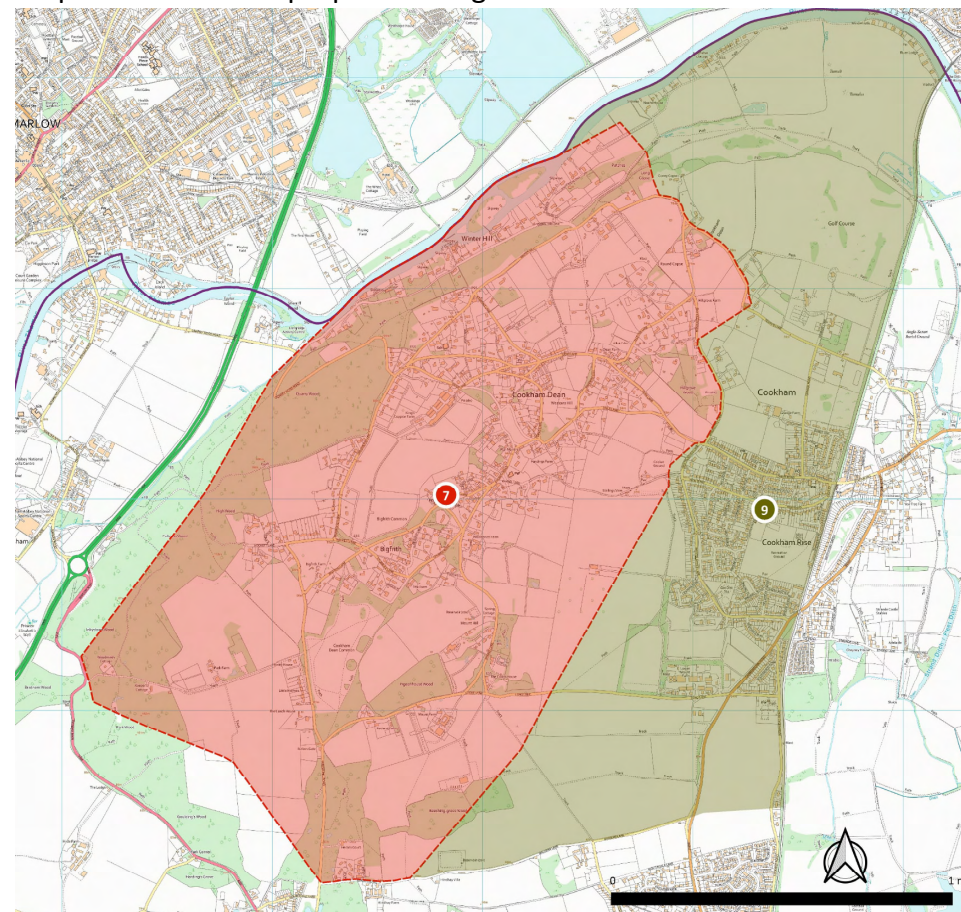


Map 2: showing overlapping area in more detail

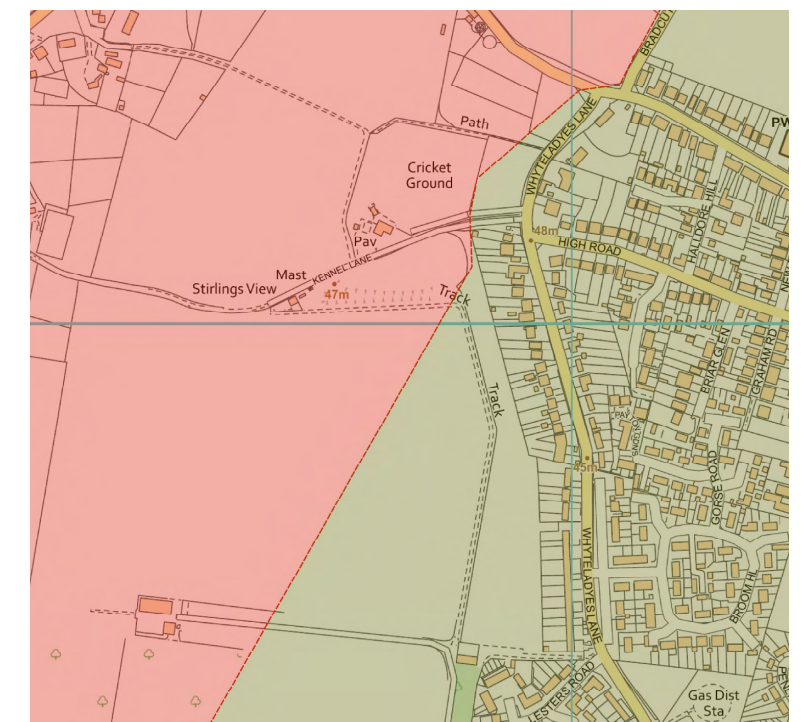


Proposed designated areas for Cookham Dean and Cookham Rise Primary Schools

Map 3: full extent of proposed designated areas



Map 4: showing overlapping area in more detail



Crown copyright and database right 2021 OS 100018817. This map and the information contained within it remain the property of the Royal Borough of Windsor and Maidenhead. It may not be copied, scanned, reproduced in any format, sold or given to third parties without the permission of Ordnance Survey. (1) This map and the information contained within it are protected by intellectual property rights. (2) Whilst you have certain statutory rights that include to view and read the map, you are granted no automatic additional use rights whatsoever. (3) You the recipient of the information must ensure that the map meets your needs and are entirely responsible for the consequences of using the map. (4) This map IS NOT INTENDED for any use other than for lawful purposes.